



Concrete

The sublime authenticity of cement in spaces full of character.

A sublime autenticidade do cimento em espaços cheios de carácter.
 La sublime authenticité du ciment pour des espaces de caractère.
 Das Erhabene Authentizität von Zement in Räumen voller Charakter.
 La sublime autenticidad de cemento en espacios llenos de carácter.

BLEND

MASS

FUSE

JOIN



4 FORMATS

Porcelain Tiles

→|← 1 cm

45x90 / 17.7"x35.4"
 22x90 / 8.7"x35.4"
 60x60 / 23.6"x23.6"
 30x60 / 11.8"x23.6"

3 FINISHES

Porcelain Tiles

Natural
 Semi-Polished Matte
 Semi-Polished Shine

SLIP RESISTANCE

Porcelain Tiles

Natural
 R10
 Class 1



SEE IT IN YOUR ROOM!

Concrete Fuse 59.2x59.2 cm ret. Natural PT68R



Wall:
Concrete Blend 22.05x88.8 cm ret. Semi-Polished CT56PC2
Floor:
Concrete Blend 59.2x59.2 cm ret. Semi-Polished PT66P



Concrete Join 59.2x59.2 cm ret. Semi-Polished Shine PT69SPB



Left Wall:
Concrete Join 22.05x88.8 cm ret. Semi-Polished CT59PC2

Right Wall:
Concrete Mass 22.05x88.8 cm ret. Semi-Polished CT57PC2

Floor:
Decor Shadow Concrete 59.2x59.2 cm ret. Semi-Polished PT65P



Concrete Blend 59.2x59.2 cm ret. Natural PT66R



BLEND
44.3x88.8 cm ret. CT56R | GD19 CT56P | GD20



MASS
44.3x88.8 cm ret. CT57R | GD19 CT57P | GD20



BLEND
22.05x88.8 cm ret. CT56RC2 | GD19 CT56PC2 | GD20



MASS
22.05x88.8 cm ret. CT57RC2 | GD19 CT57PC2 | GD20



BLEND
29.5x59.2 cm ret. PT66RC | GD13 PT66PC | GD17



MASS
29.5x59.2 cm ret. PT67RC | GD13 PT67PC | GD17



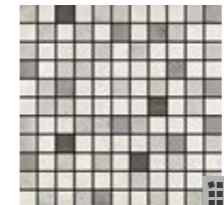
BLEND
59.2x59.2 cm ret. PT66R | GD16 PT66P | GD19 PT66SPB | GD22



MASS
59.2x59.2 cm ret. PT67R | GD16 PT67P | GD19 PT67SPB | GD22



MOSAIC CONCRETE BLEND
(4.7X4.7 CM) (PIECE) DC110 | GJ35



MOSAIC MERGE CONCRETE
(2.5X2.5 CM) (PIECE) DC107^(A) | GJ46

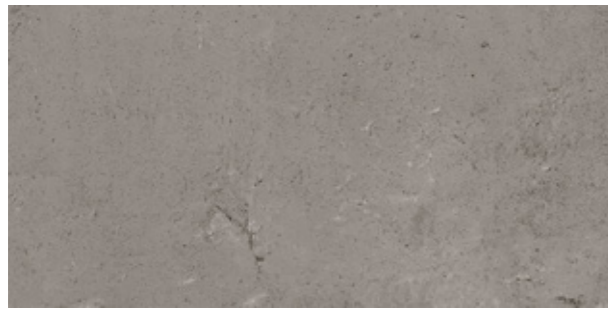


DECOR SHADOW m² PT65R | GD17 PT65P | GD20

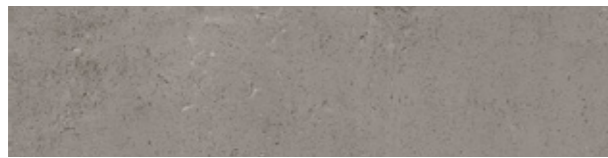


MOSAIC CONCRETE MASS
(4.7X4.7 CM) (PIECE) DC111 | GJ35

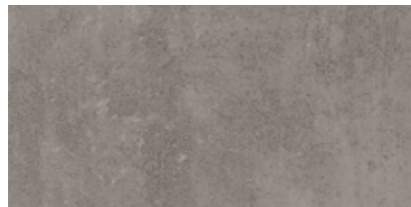
^(A) Random Drawing - Desenho Aleatório - Dessin Aléatoire - Wechselndes Design - Diseño Aleatorio



FUSE
44.3x88.8 cm ret. CT58R | GD19 CT58P | GD20



FUSE
22.05x88.8 cm ret. CT58RC2 | GD19 CT58PC2 | GD20



FUSE
29.5x59.2 cm ret. PT68RC | GD13 PT68PC | GD17



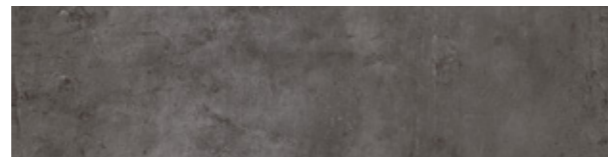
FUSE
59.2x59.2 cm ret. PT68R | GD16 PT68P | GD19 PT68SPB | GD22



MOSAIC CONCRETE FUSE
(4.7x4.7 CM) (PIECE) DC112 | GJ35



JOIN
44.3x88.8 cm ret. CT59R | GD19 CT59P | GD20



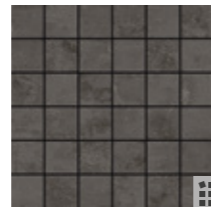
JOIN
22.05x88.8 cm ret. CT59RC2 | GD19 CT59PC2 | GD20



JOIN
29.5x59.2 cm ret. PT69RC | GD13 PT69PC | GD17



JOIN
59.2x59.2 cm ret. PT69R | GD16 PT69P | GD19 PT69SPB | GD22



MOSAIC CONCRETE JOIN
(4.7x4.7 CM) (PIECE) DC113 | GJ35



Wall:
Concrete Blend 59.2x59.2 cm ret. Semi-Polished PT66P

Floor:
Concrete Join 59.2x59.2 cm ret. Semi-Polished PT69P

SPECIAL PIECES

Stairstep Degrau, Nez-de-Marche Stufe, Peldaño	Step Extra Fluted* Degrau Espessurado, Nez de Marche Forte Epaisseur Winkelstufe, Peldaño con Espesor	Skirting Rodapé, Plinthe Sockel, Rodapié
44.3x88.8x1 cm ret. GJ46	29.5x88.8x1 cm ret. GJ59	8x44.3x1 cm ret. GJ09
59.2x59.2x1 cm ret. GJ42	29.5x59.2x1 cm ret. GJ58	8x59.2x1 cm ret. GJ14
29.5x59.2x1 cm ret. GJ33		

PACKING AND WEIGHT

Sizes (cm) Dimensão, Format Maße, Formato	Pieces Peças, Pièces Stück, Piezas	SQM M ²	Weight Peso, Poids Gewicht, Peso	Box Caixa, Bolte Karton, Caja	SQM M ²	Weight Peso, Poids Gewicht, Peso
44.3x88.8x1 ret.	2	0.787	17.72	43	33.841	782
22.05x88.8x1 ret.	5	0.980	21.67	44	43.120	973
59.2x59.2x1 ret.	3	1.050	23.20	36	37.800	855
29.5x59.2x1 ret.	6	1.050	22.79	32	33.600	754

* Minimum of 10 pieces. Quantidade mínima de 10 peças. Quantité minimum de 10 pièces. Mindestmenge: 10 Stücke. Cantidad mínima de 10 piezas